



Family Service
of Rhode Island

FOR BRIGHTER FUTURES



2009

OUR MISSION

To respond creatively to the unmet needs of individuals,
families and the community by building partnerships that
help people help themselves

Hope and change



Hope and change. The themes of 2009 for the state, nation and world.

Layoffs, foreclosures, devastated retirement plans, and budgets only balanced with severe pain. Who would have believed it two years ago?

Dreams fade, the future frightens, and vulnerable children and families suffer even more. With your support, we respond, bringing care and nurturing hope – in hardscrabble neighborhoods in Providence, Central Falls, East Providence, Westerly, Newport, Cranston and beyond. To the distraught man who pulled out a gun and started shooting after he lost his job and his house; to the confused senior citizen literally dumped on the street to fend for herself; to the teen at risk of dropping out of school; to many others finding the opening years of the new millennium an era of heartbreak.

Now is when the work of Family Service of Rhode Island means the most, helping families access emergency food, decent, safe housing and more. And with your support, we will continue to be there as lives change in formerly unimaginable ways.

Despite the too often horrifying headlines, positive change has been happening. In 2008 AIDS Project Rhode Island, a leader in HIV/AIDS services, merged with us, also an HIV/AIDS service provider. The result: the creation of “one stop shopping” for persons living with the disease. More changes are possible in the months ahead, as the non-profit sector works collectively to identify methods to do more with much less – through formal and informal partnerships, jointly owned corporations, and partial and full mergers. Family Service of Rhode Island is playing a leadership role, and is an important convener bringing people together to solve problems, to envision a brighter future, to foster hope.

Thank you for your support, especially in this age of turbulent economic storms, countless challenges and a multitude of uncertainties. Every time you help, for us the words of our new President ring true: **Yes We Can!**

A handwritten signature in black ink, appearing to read 'Margaret Holland McDuff'. The signature is fluid and cursive.

Margaret Holland McDuff
Chief Executive Officer



News

AIDS Project RI and Family Service of Rhode Island merge.

Providence Mayor David Cicilline, a former AIDS Project RI board chair, said “I am extremely pleased that two of Rhode Island’s most respected AIDS service organizations will be under one roof, reducing operating costs and ultimately better serving their current and future clients.”

United Way 2-1-1 in Rhode Island, an around-the-clock health and human services hotline, now staffed and managed by Family Service of Rhode Island. Dialing 2-1-1 or logging onto www.211ri.org is the fastest way to get health and human services information.

Family Service of Rhode Island now staffs state after-hours elder abuse hotline. This is the first time the hotline has been staffed after-hours, despite a state law requiring it passed in the 1980s. In a December 16, 2007 report in the *Providence Journal*, Detective Sgt. William Merandi, the commanding officer in charge of the Special Victims Unit of the Providence Police Department, said “Before this partnership with Family Service, we had no protocol, policy or procedure in place” for dealing with emergency situations after-hours. “I’m very grateful we do now.”

Agency receives the Providence Community Partner Award for its 5 years of working closely with the Providence Police Department. Family Service of Rhode Island provides social workers 24/7 to violent crime scenes involving children, and staff to travel with officers on patrol to intervene at family and neighborhood disturbances.

U.S. Senator Jack Reed receives 2008 Brighter Futures Award.

He is a champion of children’s health concerns and has consistently supported Victims of Crime Act funding and the Community Development Block Grant program. Both are critical to partnerships Family Service of RI has with the Providence and East Providence police to help crime victims. The Brighter Futures Award is given annually by Family Service of RI to salute those improving the lives of children.

State Representative Eileen Naughton Receives Award for HIV/AIDS Advocacy. She was among a number of awardees at the Red Ribbon Community Service Awards Dinner, sponsored by AIDS Project RI, now a division of Family Service of RI.

Agency receives Better Business Bureau Accreditation – one of only four non-profits in the Ocean State earning accreditation.



U.S. Senator Jack Reed receives 2008 Brighter Futures Award



State Representative Eileen Naughton receives Award for HIV/AIDS Advocacy



Inmates change view of victims, thanks to Family Service of RI.

The agency's victim impact classes at the state Adult Correctional Institutions were featured in a November 23, 2008 article in the Providence Journal. "Their thought patterns didn't include empathy for the victim prior to taking the class..." said A.T. Wall, corrections director. "I really believe the class has changed the point of view of many who have participated."

Roger Williams University, Family Service of RI holding first annual Victim Assistance Academy. The academy will increase the knowledge of professionals helping crime victims. The first session takes place in the summer of 2009.

The agency is pioneering, along with the Department of Corrections, a gender-specific re-entry program for women at high risk of recidivism. Working directly with the probation office, the program focuses on training, job placement, education, housing, family reunification, community reintegration and more.



Programs

AIDS

AIDS Project RI. A wide range of social services for people living with HIV/AIDS. 831-5522. For intake: 331-1350 ext. 3162.

Drop-in center (Afia Center for Health & Wellness), 331-1350 ext. 3268. Confidential location in Providence.

Speakers Bureau. An HIV/AIDS prevention program geared toward youth. 831-5522.

Housing. Apartments for adults living with HIV/AIDS. Contact partnering agency AIDS Care Ocean State for admission information: 521-3603.

Child Development

Early Intervention (EI). For newborns to 3 year olds with or at risk of developmental delays. 331-1350 ext. 3395.

Parent Aide. Parent education and case management for parents referred by Department of Children, Youth and Families. 331-1350 ext. 3162

Solutions CEDARR. Services for children with long-term emotional, developmental and health problems. Up to age 21 in some circumstances. 461-4351.

Counseling & Related

Family Care Community Partnerships (FCCP) – A range of social services, including “high fidelity wraparound,” for families with children/youth at risk of involvement with the Department of Children, Youth and Families and/or have a serious emotional disturbance. Providence area: 331-1350 ext. 3162. West Bay: 1-866-840-6532.

Outpatient Mental Health / Substance Abuse Counseling & Psychiatric Services. For adults and children. Office-based in Providence, North Kingstown, Westerly. For Medicaid and Neighborhood Health Plan members, Community Support is available if barriers to outpatient or additional supports are needed. For all: 331-1350 ext. 3162.

Outreach to Newport area families in crisis. Provided in partnership with the Dr. Martin Luther King, Jr. Community Center. 294-6138 or 331-1350 ext. 3162.

United Way 2-1-1. 24/7 information resource line for children, youth, adults and families in crisis. Dial 211.

See also Schools.

Crime Prevention / Victims / Reentry

After Hours Emergency Response Program for Elders in Crisis. Emergency social services. Call the Department of Elderly Affairs, 462-0555 for information.

Children's Crisis Assessment Team. Provides 24/7 response for children in crisis when called by Department of Children, Youth and Families. For information only: 331-1350 ext. 3162.

Critical Incident Stress Management Team. Responding 24/7 to community emergencies. For information only: 331-1350 ext. 3126.

East Providence Police Liaison. Staff rides with East Providence police officers to intervene in family crises. Follow up to domestic violence. 331-1350 ext. 3162.

Providence Police Go-Team. Responds to calls from Providence Police in response to violent incidents when children and families have been involved. For information only: 331-1350 ext. 3162.

Providence Police Liaison. Rides with Providence police on patrol to intervene in family crises. For information only: 331-1350 ext. 3162.



Providence Safe Start. Counseling and other services for Providence children and families exposed to violence. 331-1350 ext. 3162.

Reentry Program for Women at Adult Correctional Institution.

Information: 331-1350 ext. 3162.

Station Family Resource Center. For survivors of the Station Night Club fire. Case management, resource referral and financial assistance. 1-877-748-3700.

Trauma and Loss Center. Specialized counseling and support for children, youth and families traumatized by violence. 331-1350 ext. 3162.

Victim Advocate Services for the Department of Corrections Parole Board. Support, advocacy and resources provided to crime victims. 331-1350 ext. 3162.

Victim Assistance Academy. Training for new victim services professionals and volunteers. 331-1350 ext. 3162.

Victim Impact Classes. Classes helping inmates recognize their impact on their victims. For more information: 331-1350.

Youth Diversion Program (YDP). Individual and family support and case management services for youth in East Providence, Barrington, Warren and Bristol. Providence Latino families also. 331-1350 ext. 3162.

Homeless / Housing Related

Lucy's Hearth. Shelter for women and their children. Located in Middletown, RI. A Family Service of Rhode Island affiliate agency. 847-2021.

Providence Housing Authority Programming. Social services for children, youth and their families living in Providence Housing Authority complexes. 331-1350 ext. 3168.

See also AIDS

Mental Health / Intensive Treatment

Child and Adolescent Intensive Treatment Services (CAITS). For Medicaid-eligible children up to age 18 (or 21 in some instances) with serious emotional/behavioral crises requiring more than traditional outpatient counseling. A similar program for children with commercial insurance is Child and Family Intensive Treatment (CFIT). For both: 331-1350 ext. 3162.

Residential Services. Group homes for children and youth in the custody of the Department of Children, Youth and Families. Information: 331-1350 ext. 3437.

Treatment Foster Care. To become a foster parent for a child usually between the ages of 6 and 17, please call 331-1350 ext. 3305.

See also Mount Pleasant Academy under Schools

Schools

Central Falls Schools – Training to create therapeutic classrooms for children with emotional, behavioral and learning issues. 331-1350.

Mount Pleasant Academy – Owned and operated by Family Service of RI. A year-round psychiatric day treatment program for children. Licensed by the state for special and regular elementary education. 521-4335.

North Kingstown Schools – Outreach and referral for students and families in crisis. 331-1350 ext. 3162.

Providence Schools – Psychiatric evaluations for students with diagnosed disabilities and/or potentially disabled students. Consultations to special education administrators. 331-1350 ext. 3162.

Westerly High School – Mental health services for students and families. 331-1350 ext. 3162 or 294-6138 ext. 3863.



Numbers

Our clients

In 2008 services were provided to 5,689 client families impacting about 14,052 individuals throughout our state.

Young: Seven out of 10 are children, ages 18 or younger.

Poor: More than 87% are very low income.

Minorities: Half of our clients belong to minority communities.

Language: One in 7 speaks another language at home.

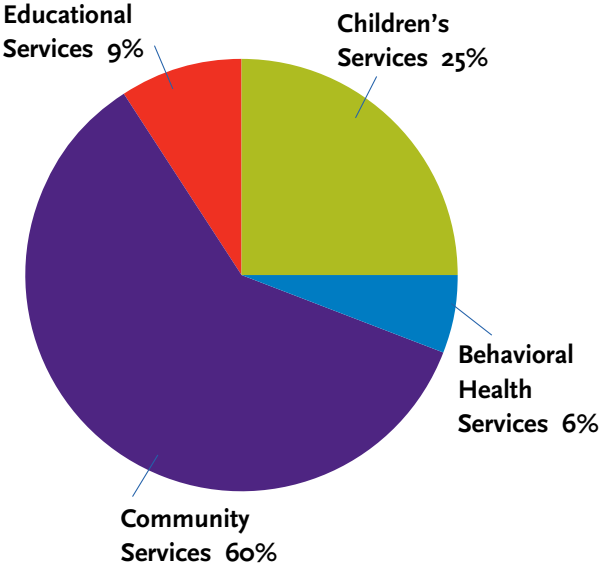
Families or Individual Clients Served by Program

Outpatient psychiatric/counseling	1499
Home-based counseling and case management	1537
Solutions CEDARR	1090
Early Intervention (infants and toddlers)	679
Residential/foster care	192
HIV/AIDS services	330
Mount Pleasant Academy	46
Elderly Assistance	182
Providence police partnership	765
Trauma and Loss Center	22
East Providence police partnership	144

Financial Report

	Year ended June 30, 2008	Percent
Public Support & Revenue		
Public Support	\$1,107,076	6%
Contract Revenue	\$6,356,725	33%
Program Fees	\$11,532,352	59%
Other Revenue	\$526,540	3%
Total Support & Revenue	\$19,522,693	100%
Expenses		
Children's Services	\$4,281,030	21%
Behavioral Services	\$1,019,993	5%
Community Services	\$10,272,035	50%
Educational Services	\$1,582,569	8%
Development	\$285,992	1%
Management	\$3,010,595	15%
Total Support Program Expenses	\$20,452,214	100%
Ending Net Assets	\$3,142,513	

Program Expenses Fiscal Year 2008

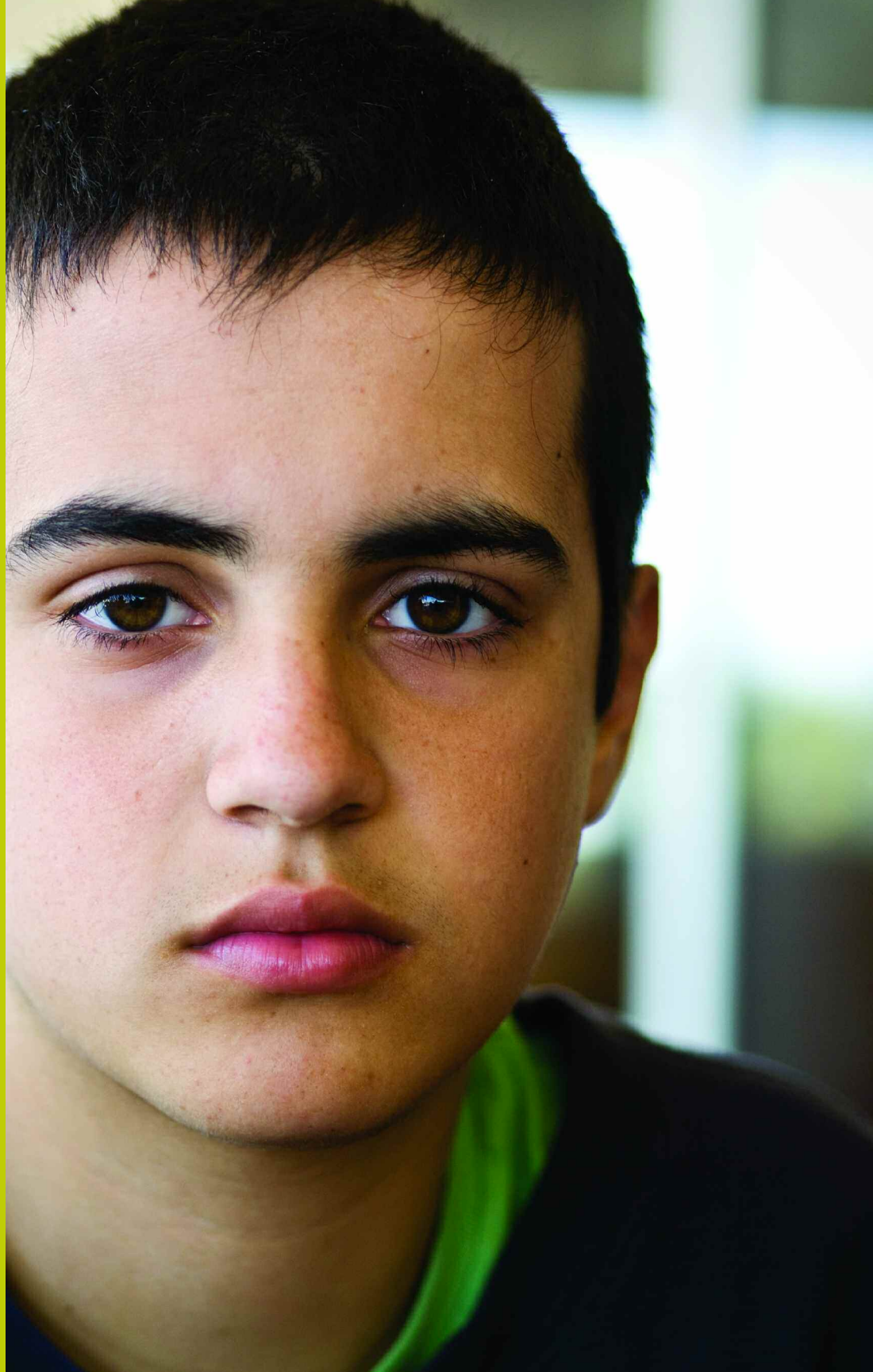


Children's Services includes Residential Treatment, Therapeutic Foster Care / Adoption and Family Care

Behavioral Health Services includes Outpatient Mental Health, Substance Abuse and Psychiatric Treatment

Community Services includes Home-based Services, School-based Services, Prevention, Early Intervention, Family Resource Center, Trauma and Loss Center, Emergency Services and Solutions CEDARR

Educational Services includes Mount Pleasant Academy



Supporters

Organizations

AAA Southern New England
Abbott Laboratories
Abrams Agency Inc.
Joseph W. Accetta &
Associates, Inc.
Aid Maintenance Co., Inc.
Aidance Skincare & Topical
Solutions LLC
AIDS Care Ocean State
AIDS Quilt Rhode Island
Al Forno
Alperin/Hirsch Family
Foundation
Amgen Foundation
Amica Companies
Foundation
Amica Mutual Insurance
Company
Andrade Faxon
The Angell Pension
Group, Inc.
James E. Arcaro Fund
Arlen Corporation
Astro-Med, Inc.
Atelier Boris Bally
Baldwin Brothers
Bank of America
BankRI
Batchelor, Frechette, McCrory,
Michael, and Co.
Bell Street Chapel
A.H. Belo Corporation
Big Gay Al's Bowling League
Blaze
Blue Cross & Blue Shield of
Rhode Island
Blue Cross & Blue Shield of
Rhode Island Blue Angel
Blue Grotto

BNY Mellon Wealth
Management
Boston Red Sox Foundation
Bristol Female Charitable
Society
Broadway Cares/Equity
Fight AIDS
Brown University
Brown University Queer
Alliance
Bruzzeze Law Group
Bryant University
E.W. Burman Inc.
Burns & Levinson LLP
Butler Hospital
Cable Positive (Tony Cox
Community Fund)
CapCo Steel Corporation
Edmund F. Capozzi, Jr. Rev.
Trust
H. Carr & Sons Inc
Casey Charitable Matching
Program
CAV
CDI Head Start
Central Congregational
Church
Mary Dexter Chafee Fund
The Champlin Foundations
The Charlesmead Foundation
Chelo Management Co., Inc.
Children's Friend and Service
Citizens Bank
Citizens Bank Foundation
Citizens Financial Group, Inc.
City of Providence
Clafin Company
Clarendon Group
Club Body Center
Club Gallery
Collette Vacations

Community HIV/AIDS
Mobilization
Congdon St. Baptist Church
Cooley Group Companies
CORE Photographic
Productions
Cornish Associates, LP
Crave Seafood Steak
CVS Charity Classic
John A. & Elsa J. DeAngelis
Fund
Delcupolo, Abramowitz &
Associates
Delta Dental of Rhode Island
DeVille's
Dexter Donation
Dimeo Construction
Company
DJB, Inc.
DJ's Deli & More
Dominion Diagnostics, LLC
Douglas A. and Charlotte H.
Dow Fund
DownCity at 50 Weybosset
DownCity Food and Cocktail
Doyle Realtors
Duffy & Shanley, Inc.
DWQ Associates, Ltd.
East Providence Community
Development Block Grant
Eastside Marketplace, Inc.
Edwards Angell Palmer &
Dodge, LLP
Electric Boat Corp., ECSA
Entertainment AIDS Alliance
Episcopal Charities Fund
Norman & Rosalie Fain
Fund Trust
Family Resources
Community Action
Feinstein Foundation, Inc.

The following information is from Family Service of RI and AIDS Project RI (now a division of Family Service of RI) databases. If you find an error or omission, please contact the development office at 401-331-1350 ext. 3367.

Fiduciary Trust Company
FirstComp Insurance
The Foundry Associates
Freedom National Bank
Friends of Eileen Naughton
Friends of Jana Planka
The Fund for Community
Progress
GALA Bowling League
Gap Organization
Garden Grille
Gateway Healthcare, Inc.
Gertrude N. Goldowsky and
Seebert J. Goldowsky
Foundation
Gilbane Building Company
Gilead Foundation
Gilead Sciences
Golowsky Foundation
GooseWing Hotels & Resorts
Gould Charitable Lead Trust
Governor's Workforce Board
GPS Investment Advisors,
LLC
Grace Church
Gracie's Bar & Grille
Grant Sherburne
Greater Providence Chamber
of Commerce
GTECH
Emma C. Harris Foundation
Hasbro Charitable Trust
Hasbro Gift of Play
Hasbro, Inc.
Hazard Family Foundation
Frank B. Hazard General
Charity Fund
Hinckley, Allen & Snyder, LLP
Kent R. Hofmann
Foundation, Inc.
Harry M., Miriam C., &
William C. Horton Fund
Hose Company No. 6
Cornelia Howell Fund
R.B. Howes & Co., Inc.
The Hudson Company
Hurd Buick-Chevrolet
Imperial Court of Rhode
Island at Providence

India
Insurance Services, Ltd.
International Institute of
Boston
J. Jay Cardosi, Inc.
Jacobs Family Charitable
Foundation
Johnson & Johnson
Services, Inc.
Johnson & Wales University
Keough Kirby Associates
Knight Gallery
Laurel Mead
Lefkowitz, Garfinkel,
Champi & DeRienzo P.C.
Liberty Mutual
Lifespan
The Lily Pad, Inc.
Lincoln High School
Lincoln Middle School
Macy's Foundation East
Magellan Health Services
Marriage Equality Rhode
Island
Gary S. Mason Trust
W.B. Mason Company
Massage Envy
Matthewson Street United
Methodist Church
McAdams Charitable
Foundation
McGaw Foundation
McLaughlin & Moran, Inc.
MetLife Foundation
MetLife Home & Auto
MG Commercial
Minerva's Pizza
Mona Vie Juice
Jamie Moore Appraisal
Services, Inc.
Alletta Morris McBean
Charitable Trust
MullenScorpioCerilli
Murray Family Charitable
Foundation
Emma L. Myrick Memorial
Fund
Mystic Aquarium
Narragansett Promotions, Inc.
National Grid

NBC 10
NCSS, LLC
Neighborhood Health Plan
of Rhode Island
New England Pest Control
New Rivers
Newport Housing Authority
Nixon Peabody, LLP
Nordson Corporation
Foundation (EFD, Inc.,
a Nordson Company)
Nordstrom
Nortek, Inc.
North Family Trust
Ocean State Action Fund
Ocean State Charities Trust
Orchard House Café
Our Place Tuxedos &
Uniforms
Out at Night/Bay Windows
PAETEC
Pakarang Restaurant
Park Row Associates
Paul Cuffee School
Pawsox
Peabody Resident Services
Pfizer
Phoenix Houses of New
England, Inc.
Phoenix Investment
Management
Piccerelli, Gilstein & Co., LLP
Picerne Real Estate
Group/Picerne Charitable
Trust
Pilgrim High School
Pitney Bowes
Planned Parenthood of RI
Prince Charitable Trusts
Procaccianti Family
Foundation
City of Providence
The Providence Center
Providence Children's
Museum
Providence Community
Development Block Grant
Providence Eagle
Providence Gay Mer's Chorus

Providence Intown
 Churches Association
 The Providence Journal
 Company
 Providence Realty
 Associates, LP
 PURVIS Systems, Inc.
 Joseph J. Reale, Jr., Ltd.
 Reflections Café
 Renaissance Medical Group
 Residential Properties, Ltd.
 Rhode Island Automobile
 Dealers Association
 Rhode Island Community
 Food Bank
 Rhode Island Council of
 Resource Providers
 Rhode Island Department
 of Corrections
 Rhode Island Department
 of Elderly Affairs
 Rhode Island Department
 of Health
 Rhode Island Department
 of Human Services
 Rhode Island Dermatology
 Rhode Island Emergency
 Food & Shelter Board
 Rhode Island Foundation
 Rhode Island Home Living
 & Design Magazine
 Rhode Island Housing &
 Mortgage Finance Corp.
 Rhode Island Justice
 Commission/Victims
 of Crime Act Victim
 Assistance Grant Program
 Rhode Island Kids Count
 Rhode Island Novelty
 Rhode Island Parole Board
 Rhode Island Patient
 Advocacy Coalition
 Rhode Island Pride
 Rhode Island State Council
 on the Arts
 Rhode Island State Victims
 of Crime Act Victim
 Assistance Grant Program
 Richard J. Richmond Fund
 Right Management

Rilassamento Massage, LLC
 Ristorante Pizzico
 Robbins Properties
 Robinson Green Beretta Corp.
 Roche Laboratories, Inc.
 June Rockwell Levy
 Foundation
 Roger Williams Medical
 Center
 Rue De L'Espoir
 Rustigian Rugs
 Saint John Stone
 Salem Foundation
 Sansiveri, Kimball &
 McNamee, LLP
 Sasco Foundation
 Seaview Transportation
 Company
 Sharpe Family Foundation
 Ellen D. Sharpe Fund
 Smiths Detection
 SoHo Business Enterprises,
 LLC
 Sovereign Bank
 Spain Restaurant
 Squires Services, Ltd.
 Herbert E. & Daisy A. Stride
 Memorial Foundation
 Student American
 Pharmaceutical
 Alice I. Sullivan Charitable
 Trust
 Swarovski Matching Gifts
 Program
 Taste of India
 Teknor Apex Company
 Temple Shalom
 3 Steeple Street Bistro & Bar
 Thundermist Health Center
 Tillinghast, Licht & Semonoff
 Times2 Academy
 Town Hall Lanes
 Trillium Asset Management
 TriMix Foundation
 Trinity Repertory Company
 Tri-Town Community
 Action Program
 United Healthcare of New
 England, Inc.

United States Department
 of Justice (Office of
 Victims of Crime)
 United States Office of
 Juvenile Justice and
 Delinquency Prevention
 United Way of Rhode Island
 United Way of Southeastern
 Connecticut
 University of Rhode Island
 Student Senate
 University Medicine
 Foundation, Inc.
 Until There's a Cure
 Foundation
 Upperbay Systems
 Van Beuren Charitable Trust
 Verizon Communications
 Vertex Distribution
 Veterans Memorial High
 School
 Vigneron Memorial Fund
 Washington Trust
 Washington Trust Foundation
 Waterman Grille
 West Warwick High School
 Winkler Group, Ltd.
 Wood's Heating Service
 Yawkey Foundation
 York Foundation
 Zooma

Individuals

David Abbott
 Courtney Abbruzzese
 Guy Abelson
 Mark Abelsson
 Donald W. Abernathy
 Michele Accardo
 Grace E. Accetta
 Michael Achey
 Mitchell L. Adams
 and Kevin M. Smith
 Eric Adams
 Linda Adler
 Pankaj L. Ahire
 Edith H. Ajello
 Jason Alexandre
 Charles Alexandre

Elizabeth Alger
Richard C. Allen
Celia Almonte
Brian Alverson
Krystal B. Alves
Virginia Amoroso
Joyce M. Anderson
Brian L. Arcand
David W. Arden
Dan Ariely
James P. and Mary Carola
A. Arnold
Mary F. Aunchman
Catherine K. Avila
Thomas Ayotte
Clare S. Bailey
Allan (Sandy) and
Patricia Ballou
Antonio Barajas
Andrew A. Barasda, Jr.
Deborah L. Barnes
Philip D. Barr
Lucia Barran
Zenaida Barran
Beverly Basiliere
Sara E. Baumgartel
Gale Bay
Bernard J. Beaudreau
John Beaudreau
Curt and Susanna Beckwith
Roger F. Belisle
Richard O. Benjamin
Oliver Bennett
Melvoid J. Benson
Geoffrey and Dianne Berg
Amelia Berg
Louise Bermon
Joseph Berretta
Robert Bessette
Christopher Bizzacco
Andrew and Deborah L.
Blakeney
Anthony Bliss
Thomas F. Bliss, Jr.
Jane M. Borelli-Loomis
Adrienne Yvonne
Borges-Dilworth
James and Kathleen Bower

Laurel L. Bowerman
Anna C. Brand
Deborah M. Brayton
Heather L. Brennan
Robert Brewster and Mary
Dorsey Brewster
Alice J. Brigidi
Alysha Brock
Eric R. Bronner
Lee Brooke
Joyce Brousseau
Jeffrey Brusini
Rodney Brusini
James and Susan M. Bryan
Ruth Buben
Susan M. Buckley
Debra A. Bunn
Stephanie Bunting
Karen R. Burke
Elizabeth Burke-Bryant
Robin and Beth Burnett
David and Anne W.
Burnham
Mary A. Burns
Helge-Caj Butler
Carl Calicchia
Joseph Campanini
Alex Capabianco
Frank Caprio
Robert and Sirje Carl
Joann P. Carlson
Clare Carlsten
Paula Carmichael and
Richelle Carmichael
Russell
Diane M. Caroselli
C.C. J. and Sally F. Carpenter
Patricia M. Carter
Eric Cartier
Michael Carvalho
Daniel Casey
Kenneth Castellucci
Robert J. Cataldo
Frank Cenerini
Michael Cerullo
Lincoln D. and Stephanie
Chafee
Charles Champagne
Carla Champlin
Debra B. Charzewski

Elizabeth M. Chellel
Bon C. Cheng
Elizabeth W. Chmielewski
Christine M. Christy
Mary Catherine Chute
Patricia Cioe
Janelle Clarke
Linda W. Cloutier
Robert H. Cloutier
Janet L. Coit and Peter J.
Regan
Madeline Collins
Charles and Elfriede A. Collis
Curt Columbus
Lois Colwell
Nancy Conca
Serena Conley
Tammy L. Conn
Rosie Connors
David and Emily Constantino
David Cooley
Susan L. Cooney
Elaine R. and William R.
Cooper
Gordon K. Cooper
Janet Cooper and Stephen J.
Nelson
Natalie Corina
Pat and Kristen Costa
Jeannette T. Costa
Bryan S. Cote
Thomas Cousineau
Paul Coutu
Christopher and Heather
Crosby
James and Carol Crowley
Octavia Cunha
Anita M. Cunningham
Karen Cunningham
Joel D. and Phyllis S. Curran
John F. Custer
Seth R. Daley
Murray Danforth, III
Todd David
Richard W. Davis
Susan Davis
Patricia De Wardener
Joseph DeAngelis

Donna M. Deascentis
 Charles H. Debevoise
 Elaine M. Decker
 Merlin and Sandra
 Deconti, Jr.
 Anne DeGroot
 Wallace R. Demary
 Charles and Sarah Denby, II
 Geraldine V. DeNuccio
 James V. DeRentis
 Joan Derrik
 Manish Desai
 Rick Devin
 Mark Diaz
 Daniel DiBari
 Guy DiBiasio
 Robert E. DiFilippo
 Robert A. DiMuccio
 Carol Diordano
 Annette E. DiTraglia
 Patricia Donahue
 George S. Dooley
 Michael and Patricia Doyle
 Jeff and Pat Draves
 Thomas Drew and Carolyn
 Benedict-Drew
 Paul J. Drummond
 R. Bobby Ducharme
 Carl L. Dufault
 Rebecca J. Dugan
 Andrew Durand
 Linda Dvelis
 Sara L. Dwyer
 Jane S. Eastman
 Dave Edwards
 Yul and Anne Ejnes
 David and Colm P. Eliet
 Robert Elliott
 E.A. Ellis
 Raymond Endreny
 Robin and James Engle
 Jennifer Engle
 Jeffrey Enright and Sara
 Strammliello Enright
 Raymond Erban
 Susan S. Erstling
 Dean Esserman
 Barry Eyre
 Ruth Fain
 William and Grace D. Falk
 Frank J. Faltus
 Joseph M. Faraone
 John Farley and Mary C.
 Farley
 John E. Farley
 Malcolm and Susan
 Farmer, III
 Sydney and Esther B.
 Feldman
 Alex Fenik
 Elizabeth P. Fenik
 Christine C. Ferguson and
 Frederick W. Glomb
 Patricia A. Fernandes
 Joanne Ferri
 Frank Ferri
 Heather I. Fisch
 Kenneth E. Fish
 Pamela Fisher
 Jeremy S. Fisher
 Laura M. Fiske
 Timothy P. and Luba
 Dumenco Flanigan
 David Flaxington
 Kathleen M. Flynn
 Larry Flynn
 Edward and Gail Fogarty
 Mr. and Mrs. Gerald G.
 Fogarty, Jr.
 Christopher Forbes
 Kenton G. Forsythe
 Joyce Fowler
 Gordon Fox
 Virginia Fox
 Kelly M. Fracassa
 Jessica Frame
 Nadine Frazier
 Susan Friendson
 Peter Fuller and Amy
 Perron Fuller
 Lisa D. Futato
 Deanne E. Gagne
 John Nicholas Gaitanis and
 Melissa Murphy Gaitanis
 Scott M. Gallagher
 Rosanne M. Galligan
 Joseph and Pam Gencarella
 Elsie B. Genga
 Michael and Doree M.
 Gerhardt
 Charles E. Gibbons
 Kendall Gibbs
 Vanessa Gilbert
 Ronald M. Gilman
 Michael F. Gilson
 Lawrence T. Ginsberg
 Abbott and Sarah C. Gleason
 Barbara Glucksman
 Carol Golden
 Neil Gonsalves
 John C. Gonsalves
 Ron Gonscak
 Nadia Good
 John J. and Ann Gooding
 Nellie Gorbea
 Stacey Graham
 Douglas G. Gray
 George and Lois W. Grabosy
 Michele Gregoire
 Kathleen A. Griffiths
 Catherine A. Grossi
 Michael Gurn
 Charles Guttman
 Bryce and Gloria Hall
 Gene A. Hall
 Elizabeth Hallenbeck
 Nancy C. Hallman
 Milton Hamolsky and Sandra
 Zion Hamolsky
 Edward T. Hanley
 Erin K. Hannon
 Nancy V. Hansen
 Maureen Haran
 Johanna L. Harris
 Bruce and Mary P. Hart
 Stephen Hartley
 Dr. Razzi Hasan
 William and Susan Hatfield
 Kevin I. Hathaway
 Ellen Healy
 Elizabeth L. Henthorne
 Arnold Herman & Sandra
 J. Gandsman
 Lawrence S. Hershoff
 Joan Hertel
 Corrine N. Hill
 Marilyn Hochman
 Matthew P. Hodge

Joseph M. Holshoe
Stacey E. Houle
Donald J. and Ann G.
Hourahan
Stephen Hourahan
Katherine Howland
Stephen L. Hug
Elizabeth Huidekoper
Peter and Betsy Hunt
Marilyn and Jeffrey
Huntsman
Jim Huseman
Jerris M. Imondi
Douglas Jacobs
Deborah R. Jacobson
Robert L. Jaffe
Marc S. Jagolinzer
Michele M. Jenks
Katherine Johnson
Susan and Glen D. Johnson
Dorothy Jonson
Gilbert R. Jordan
Stephen A. Jorgensen
J. Philip Kane
Herb E. Kaplan*
Saul Kaplan
Michael Karolewski
Ellen F. Kasle
John and Holly Keddy
Winifred A. Kelley
Sarah A. Kelly
Maura Kelly Taylor
Steven Kempner
James P. Kennedy
Tammy Kerr
Leslie M. Kershaw
Cheryl A. Kingma
Paul J. Kloiber
Bradford B. Kopp
Paula and Dennis Krauss
Kathy Kushnir
Margaret A. LaFlamme
Louis H. Lamoureux
Lucinda Landon
Douglas Landry
John Lane
Ian and Melissa Anne Lang
David Langevin
Donna Laporte

James and Elizabeth
LaRowe
Brianna J. Larsen
Bradley Laye
Michelle Leblanc
Eugene and Brook Lee
Ronald G. Lee
Ardena Lee-Fleming
Saul Leeman
Irma J. Lefever
Timothy Lehnert
Neal Leleiko and Marilyn
Bush Leleiko
Jeffery M. Lema
Cynthia Leonard Damon
Christopher Leone and
Jocelyn C. Prince
Dana S. Leslie
Raphaella Lewis
Patricia and Curtis Ley
Dorothy S. Licht
Richard A. Licht
Lewis and Edna Lipsitt
Cristina Llusia
Robert Lo Bello
William M. Lombardi
Julie Longtin
Dennis Loomis
Johnelle Luciani
Karen Lund
Brenda Lupino
Tim W. Lutz
Louis Maccarone
Robert Machado
Kati Machtley
Sandra A. MacLennan
John and Mary K. Maguire
Paul Mahoney, Jr. and Eloise
Kehler Mahoney, Jr.
John and Rogean B.
Makowski
Karen Malcolm
Marilyn J. Malina
Kevin Malloy
Leo Mansi
Mirella Marcella
Matthew Marcello
Stephen D. Marchetti
William F. Marcotte
Ramon Martinez

Humphrey and Faye Maris
Nancy Markham
Janet Marquez
Elaine Marrero
Ann Marie Marshall
Pamela J. Martin
Gloria Jean Masciarotte
Gary Mason
Michelle Masse
Andrew S. Massey
Deborah Matson
Thomas Matt
Kenneth H. Mayer
Michael J. McCabe
Julia McCann
Gregory McCarthy
Jack McConnell
Dawn McCormick
Timothy T. McCormick
Norman McCulloch, Jr.
Frank J. McDowell
Michael McDuff and
Margaret Holland McDuff
Mary and Warren
McGoldrick
Cheryl A. and William H.
McKinnon
Philip and Elizabeth W.
McMaster
Padric M. Meagher and
Michael Guy
Rosemary Mede and
Thomas D. Rainey
Jeffrey J. Medeiros
Carole Melucci
Lillian Menard
R.C. Merchant
Debra Meyers McGee
Edward Miccolis
Dennis Michaud
Russell Milham and Beth
Paul Milham
Linda and Mike Miller
Richard Mittleman
James C. Montana
James R. Monti
F. Paul Mooney
Alana G. Moore
Kristina Moore

Mae L. Moore
Patricia M. Moran
Terrence P. Moran
Stephen A. Moreau
Richard L. Morin
Eric Morin
Jone P. Morrison
Chan Mourn
Scott Mueller
Barbara L. Muniz
Brenda R. Murphy
Terrence Murray
Donald Myman
Eileen Naughton
John Nazarian
George Nee
Ronald K. Nelson
Christine R. Newman
Linda J. Nicholson
Roy J. and Paula Nirschel
Joan Nocera
Geraldine B. Noferi
Paul Nunes
Megan O'Brien
Deborah O'Donnell-Lee
Sabra K. and William B.
O'Hanley
Patricia and James L.
O'Hara
Lorna Oinonen
Nicklas Oldenburg
Katherine O'Neil
Eleanor O'Neill
Sal Orlando
Patricia R. Orr
Edwin R. Pacheco
Marie E. Palumbo-Hayes
Frank J. Pannozzi
James E. Paon
Kenneth Parent
Michael W. Parenteau
Louis J. Parisi
Jennifer A. Parkin
Donna L. Parris
John R. Partington
Sheila Pellegrini
Constance Pemmerl
Edward F. Pereira
James Pergira

Richard and Deborah
Perrotta
Matilda Perrigo
Maria I. Perrotta
Susan R. Peterson
Judith Petrarca
Russell Picozzi
Tom Pietraszek
Kate E. Piette
Marcia M. Pinheiro
Melissa Pinheiro
Kathy Placencia
Ronald S. Platt
Jonathan Pollack
Nancy Potter
Peter P. and M. Elizabeth
Potthoff
Martha Powers
Jason C. Preciphs
Brad Preston
William Preston
Peter Prioleau
Alyssa A. Quattropani
Kim Quental
Peter Quesnal
Kevin P. and Lee A. Rabbitt
Debra L. Radigan
Barbara Raposa
Nirandone Ratsombath
Arnold J. Ravo
Elizabeth and Daniel
Reardon
Joseph Reddish
Nicholas Reis
Elizabeth A. Reynolds
Ernest L. Rheaume
Robert Ricci
Dorothy Ricciardelli
Josiah D. Rich and Patricia
C. Henry
Craig Richardson and Sarah
Beinecke Richardson
Marcia Riesman
Carmen M. Rivera
Philip Rivers
Adam Robitaille
Therese Rochon
Purna Rodman Conare
Waldy S. Rodriguez
Luis D. Rodriguez

Joseph W. Rogers
Matthew Roman
Michael Romano
M.A. and E.B. Ronano
Herman Rose
Kenneth L. Rose
Lynda B. Rose
Martha Rosenberg
Jared Rosoff
Heather Ross
Shelley E. Roth
Gary Roy
Heidi L. Roynestad
Paul Ruggieri
Victor Russo
James R. Ryzcek
Joseph Sabetta
William A. Sabin
Paul R. Saccoccio
Anthony Saccone
Herbert Sackett
Jane Sackett
Alanna Sadoff
Jerrold Salmanson
Phoebe Salten
Anne Mimi Sammis
Michael Samuelson
Steven Sandler
Daniel C. Sanpietro
David Sapio
Christopher Savoie
John and Holly Schenck
Marguerite Schnepel
Joseph Schwartz
Gregory Sciaric
Allan R. Scott
Penny Seacord
Enid Seltzer
Paul J. Sepe
Paul Sepe
Robert Shadd
Henry D. Sharpe, Jr. and
Peggy Boyd Sharpe
Henry and Julia Sharpe, III
Bruce Shaw and Judith
Gibbs Shaw
Robert Sheehan
Steven A. Sheeky
Diane M. Shemtov

Mary Sheridan
Michael E. Sheridan
Jeanne M. Sherman
Eleanor L. Sherman
Thom Shola
Jean E. Shorrock
Joseph S. Siegel
Denine M. Silva
Stephen J. Silva
Paul A. Silver and Katherine
C. Haspel
Berthold Silverberg
Michael Silva
L. Brad and Dianne E.
Simmons
Linda H. Simmons
Rosalyn Sinclair
Ira J. Singer
Steve Skitek
Gail Skowron
William Slack
Mr. and Mrs. A.M. Slosberg
Jean M. Smith
Matthew Smith
Suzanne Smith
William Smith
Rachel J. Smith
Mary Ann Sorrentino
Melanie Sousa
Cynthia Spake
H.C. Spalding
Joseph Spears
William C. Spencer
Sandra St. Jean
Deborah A. St. Peter
Richard and Mary K. Morin
Dennis E. Stark and Robert
F. Amarantes
Julia Steiny
Marjorie Stenberg
Myriam Stettler
Jeffrey M. Stibel
R.M. Stineman
Valerie E. Stone
Anson and Marilyn Stookey
Gregory A. Stoute
H.K. Stowell
Jose L. Suazo

Charles Sullivan and Paul
Brooks
Karen J. Sullivan
Charles Sullivan, Jr.
Kara E. Svendsen
Mary Ellen Swift
Susan M. Symonds
Paul and Norma D.
Taubman
Zelimna Tavares
Lynn Taylor
Jeanne Taylor
Elaine Thomas
Marilyn G. Thomas
Russell F. Thomas
Anthony Thomas, Jr.
Graham Thompson
Frederick and Susan C.
Thorne
Steven P. Tingle
Randy G. Titsworth
Alison Townsend
Christine Townsend
Carol A. Townsend
Joan Tracey
Diane L. Treichler
Thomas F. Trimble
Cia Tucci
Michael A. Tumminelli
Eileen Ullmann
Christopher O. Utter
Carol Valentine
Beverly Vallee
Deborah Valletta
Matthew Valletta
Robert Valvo
Susan Van Horne
Daniel Varin and Laura
Varin Evans
Jennifer C. Vaudrain
Barbara A. and Jeffrey S.
Vecoli
Rachel Ventre
Al and Gerrie Verrecchia
Barbara Verros
Robert Vincent
Henry A. Violet
Anne Marie Vittoria
Robert Waddington
Iris V. Waite

Ellis and Deborah Waldman
Lisa Walker
Mike Walsh
Raymond L. Watson
Wivi-Anne Weber
Paul W. Weigle
Alexander H. Weintraub
Mr. and Mrs. Joseph R.
Weisberger
Raymond Welch
Stephen Wellmeier and
Anne T. Bergeron
Doris Wescott
Sarah X. Wheaton
Cordelia Wheelock
David N. Whelan
Christopher J. Whirlow
Cliff White
Doreen A. Wilgus
Joy Williams
Jeffrey Williams
Nancy J. Williams
J. Robert Wilson
Loretta Winde
Ronald H. Winde
Geraldyn Wolf
Cliff Wood
Elizabeth A. Woodhead
James Worrell
Richard Worrell
Gregary P. Wright
Shirley Wright
Al Wroblewski
Robert Wroblewski
Belinda R. Yen
Myrth York
Richard York
Donald C. Young
Neil Young
Martha A. Young
Michael Zamojski
Irene O. Ziegler
Daiva Ziukiene
Anna Znosko
Paul S. Zompa and David
Mancini
Joan Zuerner

* Deceased

Family Service of Rhode Island

Main Administrative Office:

134 Thurbers Avenue

Providence

TELEPHONE: 401-331-1350

www.familyserviceri.org

Mailing address:

PO Box 6688

Providence, RI 02940-6688

AIDS Project RI

(a division of Family Service of RI)

404 Wickenden Street

Providence, RI 02903

TELEPHONE: 401-831-5522

Mount Pleasant Academy

(a division of Family Service of RI)

1246 Chalkstone Ave.

Providence, RI 02908

TELEPHONE: 401-521-4335

Outpatient Services:

55 Hope Street

Providence

Lafayette Mills Unit 13

650 Ten Rod Road

North Kingstown

WISSP

Westerly High School

Additional facilities in

Smithfield, North Smithfield,

Bristol, and East Providence.

Board of Directors

All members are volunteers

Malcolm Farmer, III

President

William F. Hatfield

Vice President

Robert S. Waddington

Treasurer

Joan J. Hertel

Secretary

James Arnold

Allan (Sandy) Ballou

Gale Bay

Curt G. Beckwith

Melvoid J. Benson

James M. Bower

Curt Columbus

Christopher J. Crosby

Dean M. Esserman

Christine Ferguson

Stephen Hourahan

Susan Johnson

Saul Kaplan

Bradford B. Kopp

Cynthia Leonard

Mary McGoldrick

Patricia Moran

Richard L. Morin

Edwin Pacheco

Constance Pemmerl

Jason Preciph

Michael Samuelson

William E. Smith

Julia Steiny

Anson G.P. Stookey

Robert Vincent

Raymond Watson

Jeffery Williams

Margaret Holland McDuff

Chief Executive Officer

CEO Advisory Committee

All members are volunteers

William Allen

Elizabeth Dennigan

Jill Goldstein

Nellie Gorbea

Elizabeth B. MacGillivray

Jay Orson

Philip Rivers

Marguerite Schnepel

Maxine Shavers

Stephen Zito



Family Service of Rhode Island

PO Box 6688

Providence, RI 02940-6688

TELEPHONE 401 331-1350